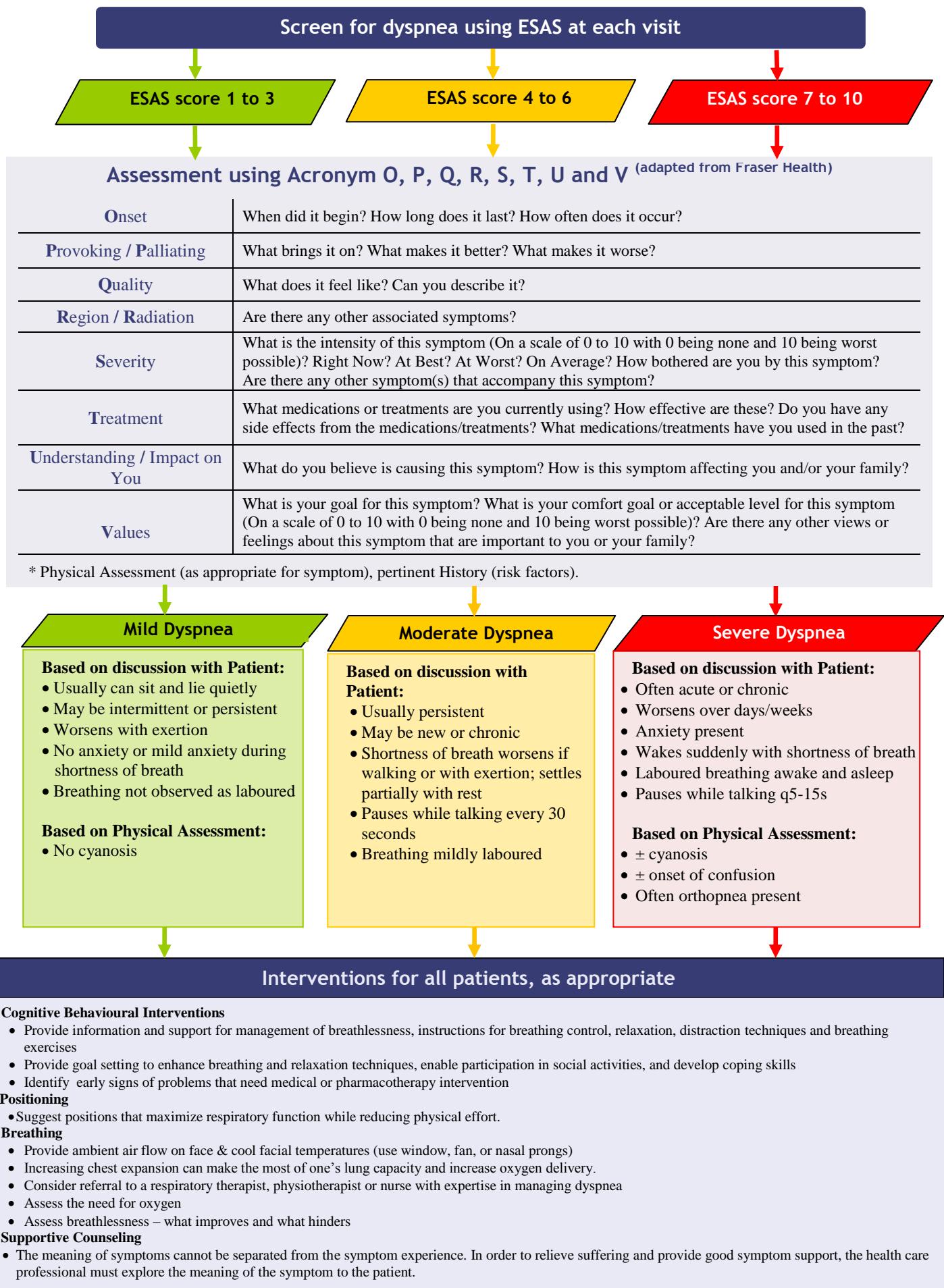
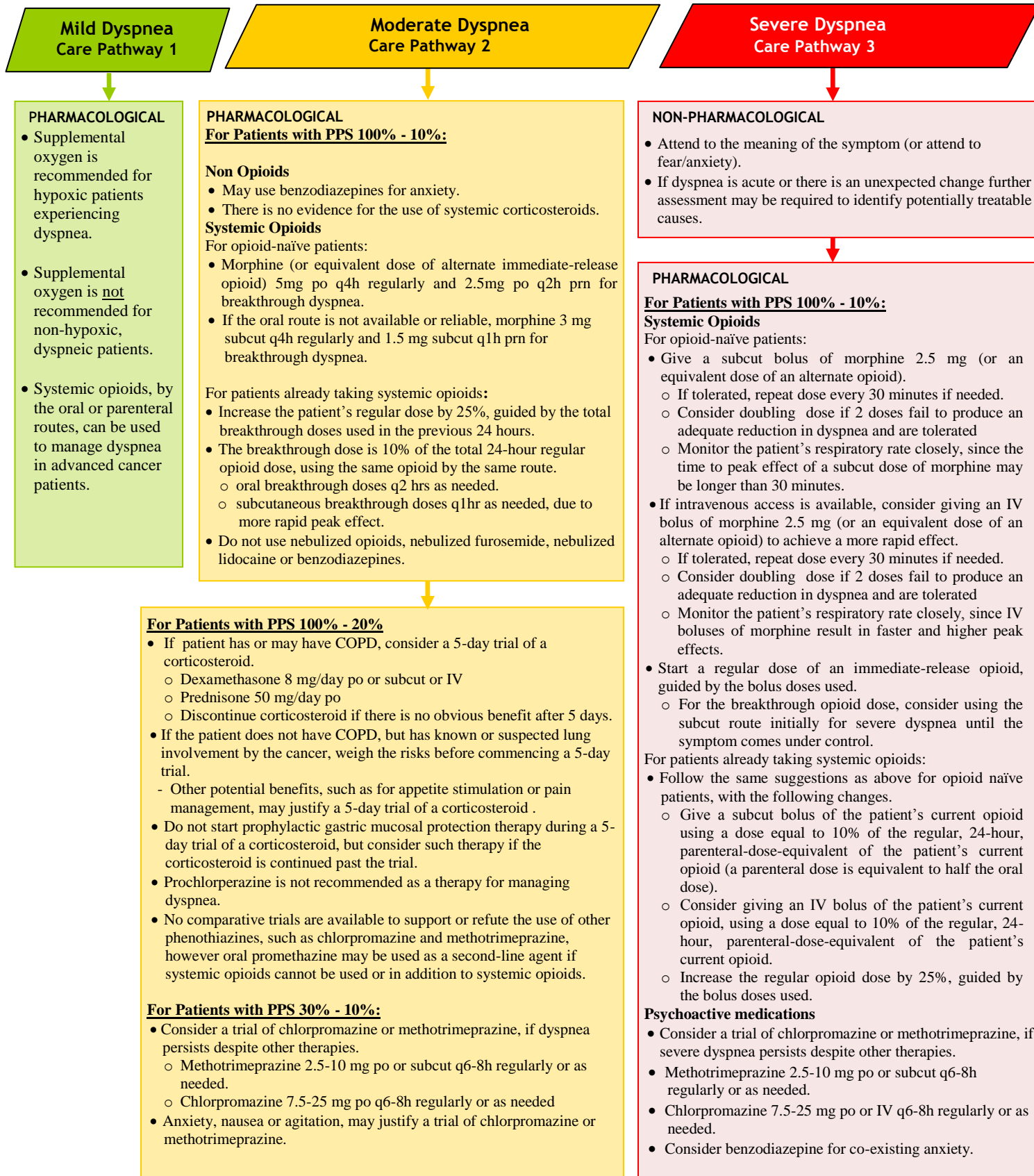


Dyspnea in Adults with Cancer: Screening and Assessment



Dyspnea in Adults with Cancer: Care Map



Follow-Up and Ongoing Monitoring

If dyspnea remains unrelieved despite the approaches outlined above, request the assistance of a palliative care consultation team.

For full references and more information please refer to [CCO's Symptom Management Guide-to-Practice: Dyspnea](#) document.

Disclaimer: Care has been taken by Cancer Care Ontario's Algorithm Development group in the preparation of the information contained in this Guide-to-Practice document. Nonetheless, any person seeking to apply or consult the Guide-to-Practice document is expected to use independent clinical judgment and skills in the context of individual clinical circumstances or seek out the supervision of a qualified specialist clinician. CCO makes no representation or warranties of any kind whatsoever regarding their content or use or application and disclaims any responsibility for their application or use in any way.